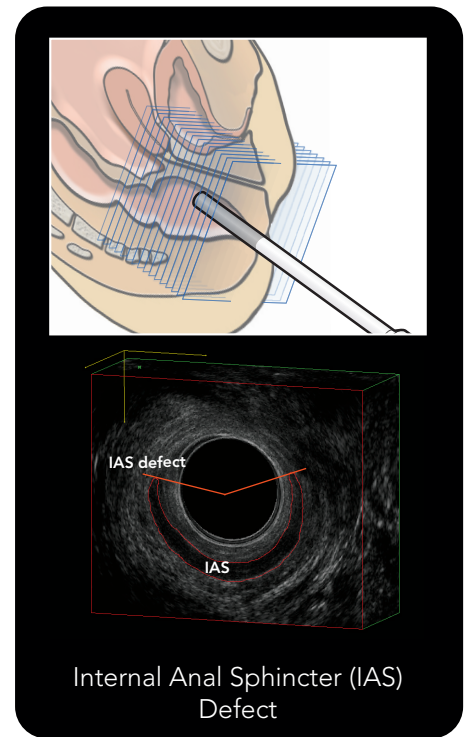
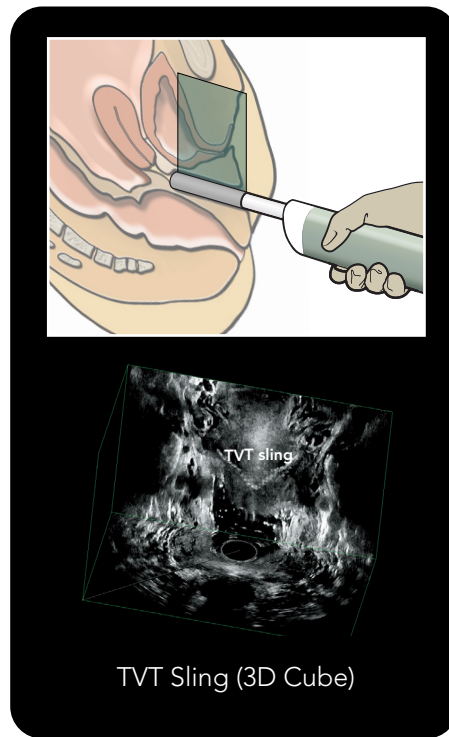
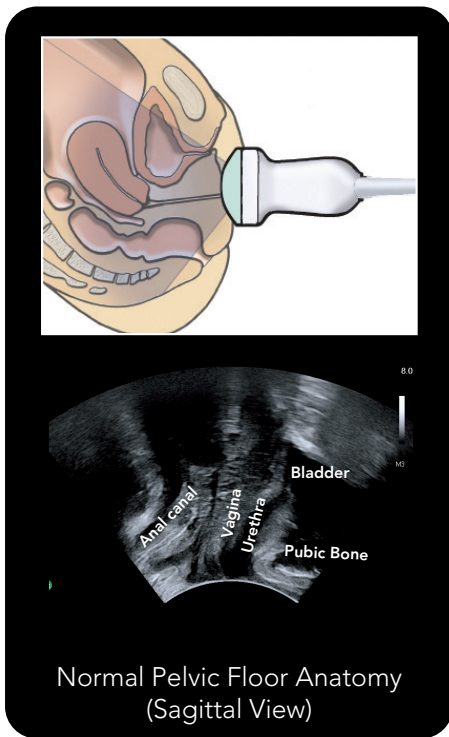


See the Complete Pelvic Floor Picture

Obtain the information you need to visualize anatomy, plan treatment, and evaluate outcomes.

- Dynamic real-time examinations during squeeze and Valsalva maneuvers
- Excellent visualization of tapes and meshes
- Manipulate 3D data to see structural details in the best plane
- Assess symmetry and abnormalities



Sterilizable Transducers



Compact 9C2 features a small footprint for easier transperineal exams.



Slim X14L4 offers color Doppler and elastography, as well as built-in 3D mover, so no moving parts touch the patient.

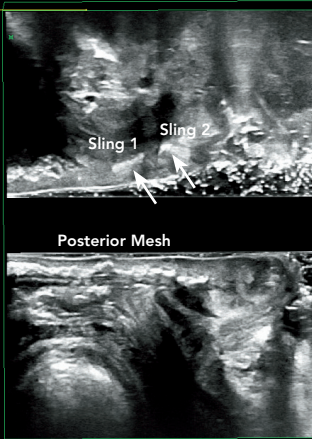


High-resolution 20R3 constructs data cube with built-in 3D mover for minimal patient discomfort.

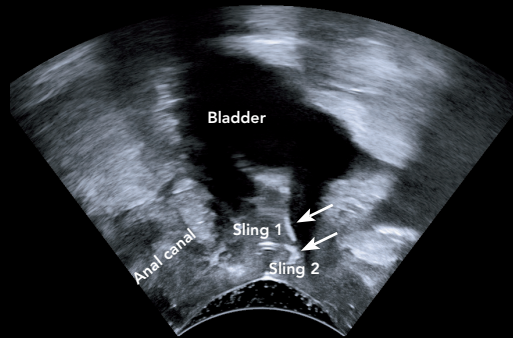


Biplane E14CL4b provides transverse and sagittal views as well as elastography for tissue differentiation.

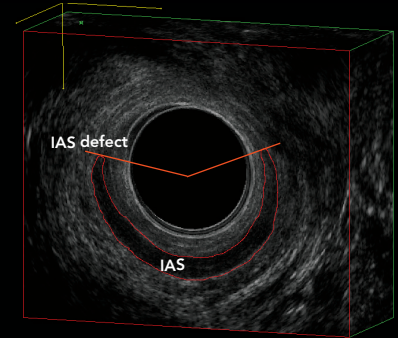
See the Pelvic Floor Details to Make Informed Decisions



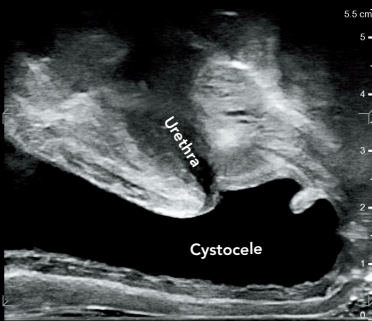
3D Cube: Slings and Posterior Mesh
X14L4 transducer



Pelvic Organs and Slings in Sagittal View
9C2 transducer



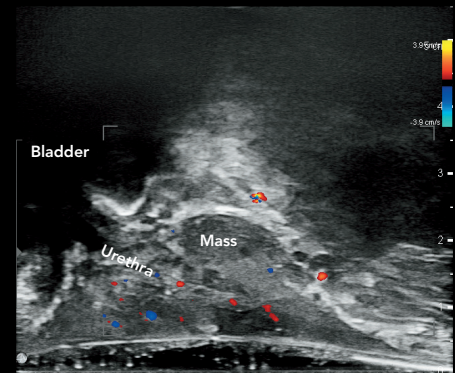
Internal Anal Sphincter (IAS) Defect
20R3 transducer



Bladder Cystocele
X14L4 transducer



Levator Ani Muscles.
U - Urethra, A - Anal Canal,
LA - Levator Ani
X14L4 transducer



Urethral mass with Color Doppler
X14L4 transducer

BK Medical
8 Centennial Drive
Peabody, MA 01960
USA
T +1 978 326 1300
bkmedical.com

USA
Sales & Service
BK Medical
8 Centennial Drive
Peabody, MA 01960
USA
T +1 978 326 1300
F +1 978 326 1399
bkmedical.com

Europe and Rest of World
Sales, Service & Design Center
BK Medical
Mileparken 34, 2730
Herlev, Denmark
T +45 4452 8100
F +45 4452 8199
bkmedical.com

bk 
medical