

# ADVANCING

# POSSIBILITIES

bk5000

# IN ULTRASOUND

- High-resolution, real-time images with clear anatomical details
- Superb images instantly - no adjustment needed
- Wide range of specialized and sterilizable transducers for a variety of clinical settings
- Simple workflow and small footprint



# ELEVATING IMAGING WITH SPEED AND EFFICIENCY

## SIMPLICITY IN FUNCTION AND DESIGN

The bk5000 is designed to deliver high resolution images quickly and efficiently. Whether you're identifying margins of a lesion or making a general assessment of an area of interest, the bk5000 has the power and performance to meet your needs.

Time and space are always at a premium, no matter what environment you're in. The bk5000 was designed with this in mind. The system has a **rapid boot time** and the battery allows for up to 2 hours of plug-free imaging.

The **No-touch Autogain** means you can keep your focus on the image instead of on the equipment.

The bk5000 also features a **remote control** for convenient and effective operation in the sterile field. All this in a system with a **small footprint** that fits virtually everywhere.



## ADVANCED TECHNOLOGIES

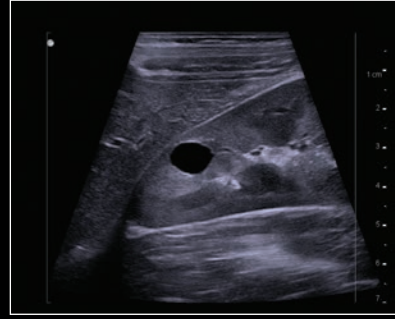
The bk5000 offers a full suite of innovative technologies along with advanced controls and adjustments to help you achieve the best possible image quality, across many applications, including:

- Outstanding **color Doppler** with superb spatial resolution and sensitivity.
- **Trucolor** dynamic color flow allows you to see high resistance blood flow patterns in blood vessels.
- Immediate, auto-optimized imaging using the **No-touch Autogain** and **Auto Focus** features.
- Compatible with **bkFusion**: Fully integrated MRI-US fusion technology for prostate biopsies.
- **Elastography**, an advanced imaging technique that allows you to see differences in tissue stiffness.
- **Unique Vector Flow Imaging (VFI)** mode that enables angle-independent visualization of blood flow.
- **Contrast imaging** that facilitates visualization of difficult lesions.
- Advanced **3D** imaging that provides structural details in optimal planes.

# REAL CLINICAL IMPACT WITH HIGH-RESOLUTION IMAGING



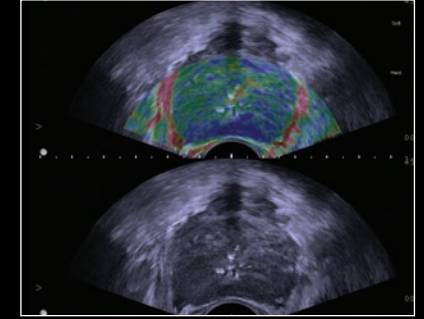
Color flow Doppler of kidney  
9C2 Transducer



Renal cyst  
8L2 Transducer



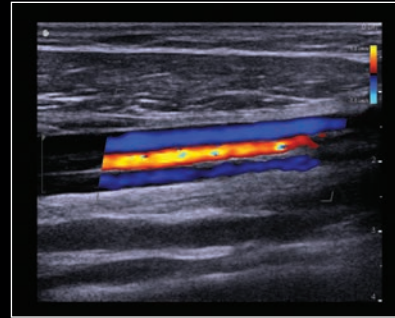
Portal vein with Vector Flow Imaging  
6C2 Transducer



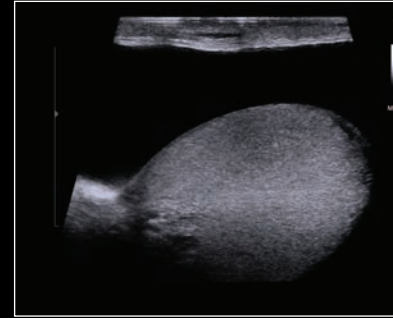
Elastography of prostate gland  
E14C4t Transducer



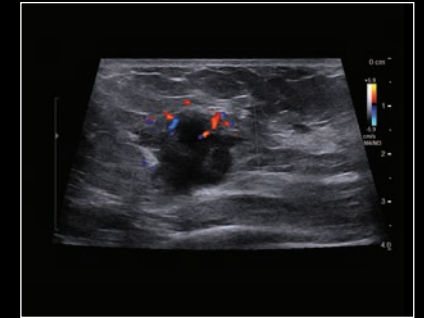
Power Doppler carotid bifurcation  
8L2 Transducer



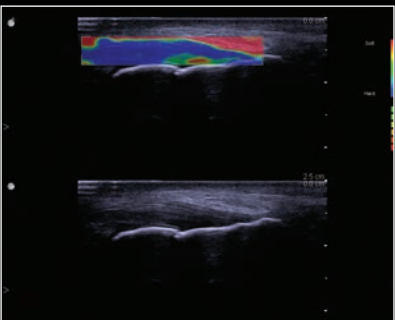
Color Doppler of calf veins  
13L4w Transducer



Hydrocele surrounding testicle using  
wide field of view  
14L3 Transducer



Color Doppler of large breast mass  
13L4w Transducer



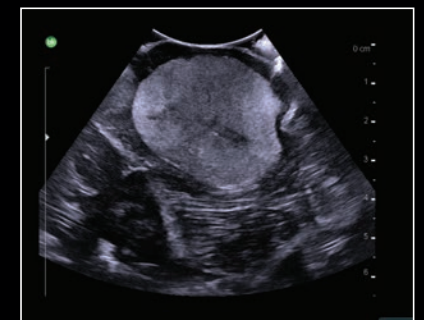
Elastography of achilles tendon  
18L5 Transducer



Cystic renal tumor  
Rob12C4 Robotic Transducer



Small metastatic lesion  
I12C5b Biplane Transducer



Metastatic lesion  
N13C5 Craniotomy Transducer

# THE RIGHT TRANSDUCER FOR EVERY NEED

Systems that are shared across different departments need to be adaptable. With a wide range of transducers, the bk5000 can easily shift from one clinical application to another. Choose from advanced **laparoscopic, intraoperative, endocavity and percutaneous transducers**, each of which have been fully validated for all common methods of sterilization.

Most transducers on the bk5000 feature the convenient **Smart Button™** that enables you to activate the transducer, freeze, store or print the images at the press of a button.

The transducers can be connected and removed with one hand using a simple locking mechanism.

E14C4t Prostate Triplane (9018)	E13C2 High Resolution Endfire (9029)	E14CL4b Endocavity Biplane (9048)	E10C4 Endocavity (9019)	5C1e Curved (9085)	6C2 Curved (9040)	6C2s Small Curved (9023)	9C2 High Frequency Curved (9002)	
								
13L4w Wide Linear (9011)	14L3 Linear (9051)	8L2 Linear (9032)	18L5 High-Frequency Linear (9070)	10L2w Wide Linear (9022)	18L5s Small High Frequency Linear (9081)	X14L4 Endocavity 3D (9038)	20R3 Anorectal 3D (9052)	
								
I12C4f 4-Way Laparoscopic (9066)	I14C5I Intraoperative (9015)	I14C5T T-Shaped Intraoperative (9016)	I12C5b Intraoperative Biplane (9024)	I12C5 <sup>1,4</sup> Mini-T Intraoperative (9034)	Rob12C4 <sup>1,4</sup> Robotic (9096)	N13C5 High Frequency Curved (9062)	N11C5s Burr Hole (9063)	
								
N20P6 <sup>4,5</sup> Minimally Invasive (9007)	X18L5s Hockey Stick (9009)	5P1 <sup>2</sup> Small Footprint Cardiac (9077)	T7P2m <sup>3,4,6</sup> TEE (9027)					
								

<sup>1</sup>This transducer has not been licensed by Health Canada.

<sup>2</sup>5P1 is not for direct use on the heart.

<sup>3</sup>T7P2m has not been licensed by Health Canada for use on the bk5000.

<sup>4</sup>This transducer is compatible with bk5000 software version 5.16.2 and higher.

<sup>5</sup>N20P6 has not been licensed by Health Canada or CE-marked.

<sup>6</sup>T7P2m is not CE-marked for use on the bk5000.

BK Medical  
8 Centennial Drive  
Peabody, MA 01960  
USA  
T +1 978 326 1300  
bkmedical.com

USA  
Sales & Service  
BK Medical  
8 Centennial Drive  
Peabody, MA 01960  
USA  
T +1 978 326 1300  
F +1 978 326 1399  
bkmedical.com

Europe and Rest of World  
Sales, Service & Design Center  
BK Medical  
Mileparken 34, 2730  
Herlev, Denmark  
T +45 4452 8100  
F +45 4452 8199  
bkmedical.com

**bk**  
medical